

FOR IMMEDIATE RELEASE  
Contact Dennis Nance  
713-528-5858  
dnance@lawndaleartcenter.org

# LAWNDALE ART CENTER

4912 Main Street  
Houston, TX 77002  
713 528-5858  
Fax 713 528-4140  
[askus@lawndaleartcenter.org](mailto:askus@lawndaleartcenter.org)  
[www.lawndaleartcenter.org](http://www.lawndaleartcenter.org)

## Lawndale Art Center Presents

### Exhibitions on view January 25 – March 2, 2013

Opening Reception January 25, 2013, 6:30 - 8:30 PM  
Artist talks at 6 PM

**Present Tense** • Curated by Sapphire Williams  
Work by Shannon Duncan, Rosine Koumen, Emily Peacock, Britt Ragsdale, Arnea Williams & Sapphire Williams  
John M. O'Quinn Gallery

**Doing It Like Dolly Does...How Does Dolly Do It** • Carrie Cook & Abi Semtner  
Cecily E. Horton Gallery

**Neutral Ground** • Dan Rule  
Grace R. Cavnar Gallery

**Rivers of Our Vision** • Xochi Solis  
Project Space

#### Also on view...

**Human Hamster Wheel** • James Ciosek  
*Mary E. Bawden Sculpture Garden*

Houston, Texas - Lawndale Art Center presents four exhibitions **opening January 25, 2013, 6:30 - 8:30 PM**, with artist talks beginning at **6 PM**. In the John O'Quinn Gallery, **Sapphire Williams'** curated exhibition, **Present Tense**, brings together six artists exploring personal narratives related to gender and societal roles. In the Cecily E. Horton Gallery, **Carrie Cook** and **Abi Semtner** use a soundtrack of Dolly Parton songs to investigate their own histories of loss for the exhibition **Doing It Like Dolly Does...How Does Dolly Do It**. In the Grace R. Cavnar Gallery, **Dan Rule's** exhibition **Neutral Ground** explores the evocative term for road medians in New Orleans through drawings, prints, animations and video. In the Project Space, **Xochi Solis** uses found imagery, vinyl, plastics, paint and colored paper to create large site-specific paintings for the exhibition **Rivers of Our Vision**.

Extended through **March 2, 2013**, **James Ciosek's** working human scale **Human Hamster Wheel** will be on view in the Mary E. Bawden Sculpture Garden.

CHAIR  
VICE CHAIR - MARKETING  
VICE CHAIR - FUNDRAISING/DEVELOPMENT  
VICE CHAIR - BOARD DEVELOPMENT  
SECRETARY  
TREASURER  
PAST CHAIR  
PROGRAMMING CHAIR

BOARD OF DIRECTORS  
JENNY JOHNSON  
PAULA MURPHY  
ELEANOR L. WILLIAMS  
KATE MCCONNICO  
NICOLE LAURENT ROMANO  
DAVID R. GRAHAM  
DIANA HUDSON  
ADRIENNE JOHNSON YOST

JAMES ANDERSON, JR.  
AMY BLUMROSEN  
LISA BROOKS  
JILLIAN CONRAD  
ARTURO CHAVEZ, AIA  
TOM DOWNING  
JOSHUA FISCHER  
SEBASTIAN FORRAY  
FRANCIS GIAMPIETRO  
ADAM GIBSON  
RACHEL HEWLETT  
BRIAN JAMES  
TIM KOLLATSCHNY  
DOUG LAWING  
MICHELLE LEWIS-BLOSSMAN  
VICTORIA LUDWIN  
LESTER MARKS  
GABRIEL MARTINEZ  
JERYN WOODARD MAYER  
BARBARA FRIEDEL McKNIGHT  
BRITT RAGSDALE  
ANDREW SCHIRMEISTER III  
CHRISTOPHER SPERANDIO  
MIRI WILKINS  
SANDRA ZALMAN

EMERITUS  
GRACIE CAVNAR  
TIM CROWLEY  
JONATHAN DAY  
ANITA GARTEN  
ANN HARITHAS  
CECILY E. HORTON  
KAROL KREYMER  
MARSHAL LIGHTMAN  
BROOKE STROUD  
JAMES SURLS

STAFF  
CHRISTINE JELSON WEST  
Executive Director

DENNIS NANCE  
Exhibitions and Programming  
Director

EMILY LINK  
Community Relations Coordinator

REGINA VIGIL  
Office Manager

JOHN MENG  
Graphic Design Intern

-MORE-

# LAWNDALE ART CENTER

4912 Main Street  
Houston, TX 77002  
713 528-5858  
Fax 713 528-4140  
[askus@lawndaleartcenter.org](mailto:askus@lawndaleartcenter.org)  
[www.lawndaleartcenter.org](http://www.lawndaleartcenter.org)

John M. O'Quinn Gallery

## ***Present Tense***

**Curated by Sapphire Williams**

**Work by [Shannon Duncan](#), [Rosine Koumen](#), [Emily Peacock](#), [Britt Ragsdale](#), [Arnea Williams](#) & [Sapphire Williams](#)**

*Present Tense* brings together the work of six artists using sculpture, video and photography to explore personal narratives that vary in topics from gathering resources from loved ones and managing the physical residue of past relationships to questioning luxury driven consumerism. The works rely on the shared vocabulary of gender and together express moments of confusion and clarity as the artists navigate the balance between the seemingly concrete yet rapidly shifting position of their assumed societal roles. *Present Tense* will feature new works by Shannon Duncan, Rosine Kouamen, Emily Peacock, Britt Ragsdale, Arnea Williams and Sapphire Williams.



**Emily Peacock**  
*Pieta # 3*, 2012  
20" x 20"  
Archival Inkjet Print

**Sapphire Williams**, emerging artist and curator, was born in Nassau, Bahamas and currently lives and works in Houston, Texas. She graduated magna cum laude from the University of Houston with a BFA in Sculpture. Sapphire uses a varied series of approaches to explore ideas surrounding gender, class, and codependency through the use of subversive gestures and humor. Her work has been exhibited at Skydive Art Space, Blaffer Art Museum, Lone Star Studios, G Gallery, Project Row Houses and Blue Star Contemporary Art Center. She received the Liz Alexander Visual Arts Award from the Houston Arts Alliance in 2011 and is currently working on producing an art talk radio show for Houston's own KRTU.

Cecily E. Horton Gallery

## **Carrie Cook & Abi Semtner**

### ***Doing It Like Dolly Does...How Does Dolly Do It***

Carrie Cook and Abi Semtner both find consolation in the country music they grew up with. *Doing It Like Dolly Does... How Does Dolly Do It* meditates on the role that loss and memory play in this music and has played in their personal developments. With both humor and seriousness of heart, Cook and Semtner consider Dolly Parton to be a guide in this effort. Working separately, they both use a soundtrack of Parton's songs to investigate their own histories of loss.



**Carrie Cook & Abi Semtner**  
*Doing It Like Dolly Does...How Does Dolly Do It*  
Collage  
5" x 7"

**Carrie Cook** combines found images with her own photography in such a way that the essential content is often subtracted or obscured. The resulting collages, which point

**-MORE-**

# LAWNDALE ART CENTER

4912 Main Street

Houston, TX 77002

713 528-5858

Fax 713 528-4140

[askus@lawndaleartcenter.org](mailto:askus@lawndaleartcenter.org)

[www.lawndaleartcenter.org](http://www.lawndaleartcenter.org)

*to the flawed nature of memory and perception, are then translated into paintings, adding another layer of distance to the already abstracted image. Cook's work has been shown recently in the group shows "HOWBOUTNOW" at 4411 Montrose, "A View From There" at Art Palace Gallery and "Daily Dance" at Domy Books. She is a teaching fellow and MFA candidate at the University of Houston School of Art.*

**[www.cecook.com](http://www.cecook.com)**

**Abi Semtner** works in a meditative process of selecting and manipulating familiar and domestic materials. She is interested in handwork, gathering, sorting and collecting. Tenuous and vague memories take shape as Semtner searches for the right object, allowing a personal mythology to emerge. Semtner is a 2012 graduate from the University of Houston's School of Art where she studied Painting and Drawing. Her thesis work was presented last spring at Diverseworks. She has also exhibited at The Rockport Center for the Arts and Blue Star Lab in San Antonio. She is currently an adjunct instructor at Lone Star College Kingwood.

Grace R. Cavnar Gallery

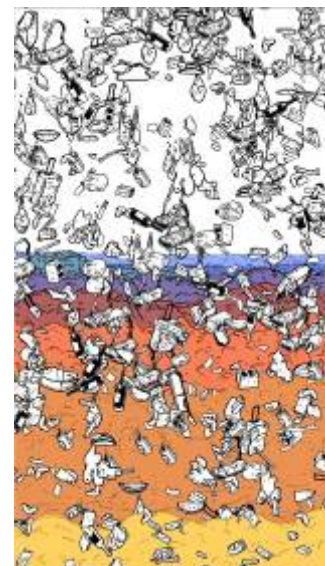
**Dan Rule**

***Neutral Ground***

Dan Rule works mainly in drawing, prints, animation and video. The prints and animations in the exhibition *Neutral Ground* share an initial interest and further tangential exploration in the word "Neutral Ground"; the evocative term for road medians in New Orleans. Immediately upon arriving to the city Rule was struck by the term and saw it as humorously descriptive. Here the middle ground was accurately termed as the safe haven between two opposing factions of traffic. It was also a space for small sections of 'nature' made neutral by both their general acceptability and innocuousness. By living in the city longer, more associations and relationships with the term have informed Rule's recent work, including historical, war-related connotations, giving him an interest in depicting a squishing of temporal changes into the same, shared physical space. The isolation of objects and concepts in art institutions, where the 'white cube' separates reality, creates an actual neutral ground.

**Dan Rule** was born in Belleville, IL in 1977. He studied printmaking at Southern Illinois University Carbondale (BFA) and Northern Illinois (MFA). He works primarily in drawing, prints, video and animation, often focusing on topics that are scientific and philosophical in nature. Rule is currently an Assistant Professor of Art at the University of New Orleans, where he teaches Printmaking, Photography and Digital media. He has exhibited nationally and in Japan, Canada and Europe. Rule currently resides in New Orleans with his wife Kaori, son Sean and daughter Hana.

**[cargocollective.com/danrule](http://cargocollective.com/danrule)**



**Dan Rule**  
*Authentically Lived Their  
Lives on Camera, 2012*  
Animation  
TRT 9:35

**-MORE-**

# LAWNDALE ART CENTER

4912 Main Street

Houston, TX 77002

713 528-5858

Fax 713 528-4140

[askus@lawndaleartcenter.org](mailto:askus@lawndaleartcenter.org)

[www.lawndaleartcenter.org](http://www.lawndaleartcenter.org)

Project Space

**Xochi Solis**

## ***Rivers of Our Vision***

*Rivers of Our Vision* exhibits new work by Austin-based artist Xochi Solis. Constructed from a variety of media, Solis uses found imagery, vinyl, plastics, paint and colored paper to create large site-specific paintings with repeated ellipses and gestural paint strokes. Solis positions the nuances of transitory emotional states as central to her current body of work. Fascinated by the universal claims of love and loss in popular music, she contemplates desire, disappointment and love: "I let each work remark upon a private narrative, focusing on the personal navigation of an emotional state," Solis comments, "It is a curious notion that any given circumstance can emotionally affect a group of people in a disparity of ways or perhaps even more curious in identical ways." Extending the experiential impact of the exhibition's large-scale wall paintings, Solis invites the public to use the exhibition as a backdrop for a listening and lyric reading *Record Swap* party hosted one Saturday during the run of the exhibit. Solis intends to build resonances between the color and construction of the installation with events and experiences. *Rivers of Our Vision* aims to create an enveloping environment, creating a viewing space for meditating on feelings and the unity and isolation felt from daily existence.



**Xochi Solis**

*A little psychic research before diagnosis, 2012*  
Gouache, acrylic, acetate,  
colored paper and found images  
on museum board  
7" x 5"

**Xochi Solis** is a painter living and working in Austin, Texas. In addition to her studio practice, she is also the Director of Events and Public Programming at the Visual Arts Center, University of Texas at Austin. She received her B.F.A in Studio Art from the University of Texas in 2005. Concentrating on painting during her undergraduate career, she gained experience and insight by a semester abroad in Tuscany, as part of UT's College of Fine Arts Study in Italy program, as well as a semester in Mexico City. In 2011, Solis exhibited a solo project at SOFA Gallery entitled "All the Clouds Turn to Words". Her group exhibitions include the 2008 edition of "New Art in Austin: 20 to Watch" at the Austin Museum of Art, and the "13th Annual Young Latino Art Exhibition" at Mexic-Arte Museum. Previous to her work at the University of Texas, she was the Executive Director of the 2009 Texas Biennial and is currently an active member of MASS Gallery, an artist run project space in East Austin.

[xochisolis.com](http://xochisolis.com)

Mary E. Bawden Sculpture Garden

**James Ciosek**

## ***Human Hamster Wheel***

*Human Hamster Wheel* comments on the confines of urban living and the habitual, repetitive, sometimes futile, nature of human psychologies and activities which expend vast amounts of energy but in the end go nowhere. The piece serves as a static, interactive, and performative sculpture. Ciosek encourages attendees to Lawndale Art Center's openings and local performance artists to take a walk on the wheel. Human Hamster Wheel is part of the artist's *Icon and Symbology* series which explores meaning via iconic figurative objects, materials, and reinterpretation of traditional symbols.

**-MORE-**

# LAWNDALE ART CENTER

4912 Main Street  
Houston, TX 77002  
713 528-5858  
Fax 713 528-4140  
[askus@lawndaleartcenter.org](mailto:askus@lawndaleartcenter.org)  
[www.lawndaleartcenter.org](http://www.lawndaleartcenter.org)

*Taught to weld by his grandfather at age eleven, **James Ciosek**, (pronounced cho-zik), continues a family legacy working as a professional metal smith since 1993. He started out in the artisanal iron and glass sectors and currently practices as a fine art sculptor. Ciosek earned a blacksmithing certificate from the Artist Blacksmith's Association of North America, and a B.S. in Mass Media from New York University. Ciosek shifted his emphasis from custom ornamental work towards sculpture in 2003, with his first solo show "Brownfield Flowers" at the Cochran Gallery, Dayton, Ohio in 2004. Setting up his studio in Houston, Texas in 2006, Ciosek has exhibited in juried shows at Lawndale Art Center, G-Gallery, The Arts Alliance Center at Clear Lake, K-Space (Corpus Christi), Bergstrom Airport (Austin), and Redbud Gallery which currently hosts a longterm solo showing of his formal series "Constructed Chaos." Ciosek is a regular contributor of work to the Art Car Museum and The Houston Art Car Parade. He seeks to build and sustain the wider folk art community in Houston by participating with his award winning "Frankenova" art hotrod, and by teaching youth art bicycle classes at Roberts Elementary School, a program he developed as a resident at Labotanica's "School of Lattitudes."*

[www.jamesciosek.com](http://www.jamesciosek.com)



**James Ciosek**  
*Human Hamster Wheel*  
Proposal sketch

For more information on upcoming exhibitions and programs, please visit <http://www.lawndaleartcenter.org>.

<b>About Lawndale:</b>	Lawndale Art Center develops local contemporary artists and the audience for their art. Lawndale is dedicated to the presentation of contemporary art with an emphasis on work by Houston artists. Lawndale presents exhibitions, lectures and events, and offers an annual residency program to further the creative exchange of ideas among Houston's diverse artistic, cultural and student communities.
<b>Address:</b>	4912 Main St., Houston, TX 77002
<b>For More Info:</b>	<a href="http://www.lawndaleartcenter.org">www.lawndaleartcenter.org</a> or <a href="mailto:askus@lawndalwartcenter.org">askus@lawndalwartcenter.org</a>
<b>Gallery Hours:</b>	Monday-Friday, 10-5; Saturday, 12-5; Closed Sunday
<b>Admission:</b>	Free
<b>Exhibition Dates:</b>	These exhibitions will open on Friday, January 25, 2012 and will remain on view through Saturday, March 2, 2013.
<b>Press Contact:</b>	Dennis Nance, 713-528-5858, <a href="mailto:dnance@lawndaleartcenter.org">dnance@lawndaleartcenter.org</a>

Programs at Lawndale are supported in part by The National Endowment for the Arts, Andy Warhol Foundation for the Visual Arts, The City of Houston through the Houston Museum District Association, The Texas Commission on the Arts, Houston Endowment, The Brown Foundation, Inc., The John R. Eckel, Jr. Foundation, The John P. McGovern Foundation, The Wortham Foundation, Inc., Art Colony Association, John M. O'Quinn, Cecily E. Horton, Ann W. Harithas, Diana M. Hudson and Lee Kaplan, Chinhui Juhn and Edward R Allen III, Bevin and Dan Dubrowski, Bruce Eames, Anita and David Garten, Felvis Foundation/David R. Graham, Jenny and Mark Johnson, Jeryn and Walter Mayer, Paula Murphy, Andrew C. Schirmeister III, Scott Sparvero, Gabriela Trzebinski, TeleFlex, United Airlines, Kinzelman Art Consulting, Poggenpohl Design Studio and other contributors, memberships, benefit events and many volunteers.

- END -