

FOR IMMEDIATE RELEASE
Contact Dennis Nance
713-528-5858
dnance@lawndaleartcenter.org

LAWNDALE ART CENTER

4912 Main Street
Houston, TX 77002
713 528.5858
Fax 713 528.4140
askus@lawndaleartcenter.org
www.lawndaleartcenter.org

Lawndale Art Center

Presents

Exhibitions on view May 6 – June 11, 2016

Opening Reception Friday, May 6, 2016, 6:30 - 8:30 PM
Artist talks at 6 PM

how2maggie – Bradly Brown, Cobra McVey and Anthony Sonnenberg
Lawndale Artist Studio Program Exhibition
John M. O'Quinn Gallery

Surface Dwellers – Samantha Persons & Christopher Wallace
Cecily E. Horton Gallery

May-Can-Will – Alex Goss
Grace R. Cavnar Gallery

Triptych – Michelle Chang
Project Space

Houston, Texas – Lawndale Art Center presents four exhibitions **opening May 6, 2016, 6:30 – 8:30 PM**, with **artist talks beginning at 6 PM**. In the John M. O'Quinn Gallery, residents from the tenth round of the Lawndale Artist Studio Program, **Bradly Brown, Cobra McVey** and **Anthony Sonnenberg** present work made during their time at Lawndale for the exhibition **how2maggie**. In the Cecily E. Horton Gallery, **Samantha Persons** and **Christopher Wallace** tackle notions of narrative, pattern and obsession with 0.40-millimeter pens for the exhibition **Surface Dwellers**. **Alex Goss** transforms the Grace R. Cavnar Gallery into a space referencing public restrooms for the exhibition **May-Can-Will**. In the Project Space, **Michelle Chang's** installation, **Triptych**, references the architecture of the gallery, creating an alternate fiction to the current threshold to reveal its gaps. These exhibitions continue **through June 11, 2016**.

In addition to these exhibitions **Russell Etchen's** mural, titled **About ___ Rocks**, will be on view on Lawndale's north exterior wall. **The Expanded Environment's** installation **BioCity**, a cross-disciplinary, performance-art-sculpture designed to attract, interface or illustrate indigenous and migratory life, will be on view in the Mary E. Bawden Sculpture Garden.

BOARD OF DIRECTORS
CHAIR JERYN WOODARD MAYER
VICE CHAIR TIM KOLLATSCHNY
VICE CHAIR - MARKETING PAULA MURPHY
VICE CHAIR - FUNDRAISING/DEVELOPMENT ELEANOR L. WILLIAMS
SECRETARY VICTORIA LUDWIN
TREASURER LOREN McCRAE
PROGRAMMING CHAIR KATIA ZAVISTOVSKI

MICHELLE ADAMS
JAMES ANDERSON, JR.
DANIEL ANGUILU
SARA BECK
MICHAEL BISE
NATASHA BOWDOIN
CHRIS CASCIO
LILY COX-RICHARD
JASON DIBLEY
PETE GERSHON
DENNIS HATCHETT
BRIAN JAMES
CECILIA MÁRQUEZ
BARBARA FRIEDEL McKNIGHT
MEGHAN MILLER
EMILY PEACOCK
CALIA A. PETTIGREW

EMERITUS
GRACIE CAVNAR
TIM CROWLEY
JONATHAN DAY
ANITA GARTEN
ANN HARITHAS
DIANA HUDSON
CECILY E. HORTON
KAROL KREYMER
MARSHAL LIGHTMAN
BROOKE STROUD
JAMES SURLS

STAFF
STEPHANIE MITCHELL
Executive Director

DENNIS NANCE
Exhibitions and Programming
Director

EMILY LINK
Community Relations Coordinator

KATIE PATTERSON
Development Coordinator

CINTHIA GOMEZ
Exhibitions Assistant

DANIEL CARDOZA
Graphic Design Intern

-MORE -

LAWNDALE ART CENTER

4912 Main Street
Houston, TX 77002
713 528.5858
Fax 713 528.4140
askus@lawndaleartcenter.org
www.lawndaleartcenter.org

John M. O'Quinn Gallery

Bradly Brown, Cobra McVey and Anthony Sonnenberg

how2magpie

Lawndale Artist Studio Program Exhibition

how2magpie features the work of residents participating in the tenth round of the Lawndale Artist Studio Program, Bradly Brown, Cobra McVey and Anthony Sonnenberg.

As an embrace of fetishized environments and historical modes of production **Bradly Brown** presents the viewer with multiple investigations and stage elements from act three of a four act play. An entire body of work is developed for each act, and the objects exist as research and props for the production as well as art objects when put into context. The material aspects of the play are created before the narrative is written, and are a direct response to the work created during Brown's residency at Lawndale.

Cobra McVey presents *Stuff Love*, a satirical fan magazine showcasing a new breed of media darling. Representing the fallout from widespread industrialization, the stars of *Stuff Love* are born of consumer culture, new life forms mutated from orphaned thrift store objects and mass-produced "stuff." Inspired by popular teen idol publications like *Tiger Beat*, *16* and *Bop*, these mutant celebrities are elevated to heartthrob status with autographed pinups and suggested gossip columns. The presentation of these unexpected stars in the glossy pages of *Stuff Love* speaks to the modern consumer's infatuation with material goods.

Anthony Sonnenberg constructs a site specific and interactive installation entitled *Rococo Tent Fort*. His goal is to employ the same principle used when creating a quilt to building an environment, which is to merge seemingly low and disparate materials together through labor and time to create something of beauty and sumptuousness that is greater than the sum of its parts. Sonnenberg will sew, arrange and nail together found objects, fabrics and even old artworks that have been collected from across the country to create an intimate space where viewers will be able to lounge in extravagance.

Bradly Brown received his BFA in Photography from the University of North Texas in 2002. Soon after graduation Brown relocated to New York to work as a photographer and designer. In 2011 Brown returned to Texas to receive his MFA in sculpture from Texas Christian University where he co-founded the artist collective *HOME COMING! Committee*, and began working as art-director for *semigloss. Magazine*. His work has been exhibited at the *The Dallas Contemporary*, *Fort Worth Contemporary Arts*, *Hiroshima City University* and was included in the *2013 Berlin Becher Triennial* and the *2014 Dallas Biennial*. Brown received the *Fort Worth Weekly's Visionary Award (2014)*, *Mercedes Benz Financial Service Scholarship (2013)* and the *Bean Distinguished Lecture Series, St. Anselm College (2008)*.

bradlybrown.com



Bradly Brown
Column

1 (Detail), 2016
Plaster, cement, wax,
resin, foam, glass,
paper and rebar
Dimensions variable



Cobra McVey
Udder Cake, 2016
Magazine page
11" x 8.5"



Anthony Sonnenberg
All That Glitters (detail), 2012
Taxidermy, ceramic, glass,
found objects and fabric
Dimensions variable

-MORE-

LAWNDALE ART CENTER

4912 Main Street
Houston, TX 77002
713 528.5858
Fax 713 528.4140
askus@lawndaleartcenter.org
www.lawndaleartcenter.org

Cobra McVey uses found objects and recycled synthetic materials in combination with traditional art making techniques to create futuristic environments that reference contemporary culture. She is the lead singer and guitarist for Winelord, a female punk rock trio hatched from the same B-movie aesthetic that influences her visual art. She is also co-founder, costume maker, and a major dancer of The Bar-B-Que Gang Dance Troupe, an enterprise that combines design and performance. McVey received an MFA from the University of Georgia in 2012 and has been an Artist-in-Residence at Virginia Commonwealth University, The Vermont Studio Center and Houston's Post-Studio Projects.

cobramcvey.com

Anthony Sonnenberg is an artist and educator living and working in Houston, TX. He was born and raised in Graham Texas and received a BA from the University of Texas at Austin and MFA from the University of Washington in Seattle. His work ranges from porcelain to performance and is known for its labor intensive detail. Sonneberg's work has been exhibited across the US and Canada, including exhibitions at the Seattle Art Museum, the Shelburne Museum and the 2011 and 2013 Texas Biennials. He is represented by Conduit Gallery in Dallas, TX and Art Palace Gallery in Houston, TX, where he will have a solo exhibition in April 2016.

anthonysonnenberg.com

Cecily E. Horton Gallery
Samantha Persons & Christopher Wallace
Surface Dwellers

With an arsenal of 0.40-millimeter pens Christopher Wallace and Samantha Persons tackle notions of narrative, pattern and obsession. *Surface Dwellers* consists of drawings, wallpaper, sculpture and nostalgia, with a dash of science-fiction. Persons and Wallace create non-hierarchical drawings using color and mark as a technique to reference collage processes. The eye becomes visual saturated from the artists' kenophobia. Looking to the history of printmaking—particularly Dürer, Goya and Schirmer—Wallace narrates such themes as nostalgia, technology, myth and Internet culture. Using hand-drawn pattern and symmetry Persons creates the illusion of mechanical production, highlighting topics of feminism, textiles and gender/queering. Embracing the empirical flatness of paper, Persons and Wallace question what it means to be terrestrial beings trapped in a self-contained starship traveling 1.3 million miles an hour through space.

Samantha Persons is a traveling nomad, currently residing in Houston, TX. Focusing on queer science-fiction, storytelling and survivalism, she has built and installed a permanent interactive "Ranger Station" at Franconia Sculpture Park (Minnesota) and a sculptural camping shed at Kuenz Sculpture Park at Cedarhurst Center for the Arts, (Mt. Vernon, IL). Persons has been Artist-in-Residence at Urban Culture Project/Charlotte Street Foundation



Samantha Persons
Probing the infinite
queerness of space, 2016
Pen, ink and liquid gold leaf
on paper
18" x 24"



Christopher Wallace
DinoLand, 2016
Pen and ink on paper
38" x 50"

-MORE-

LAWNDALE ART CENTER

4912 Main Street
Houston, TX 77002
713 528.5858
Fax 713 528.4140
askus@lawndaleartcenter.org
www.lawndaleartcenter.org

(Kansas City, MO), Elsewhere (Greensboro, NC), and Prairie Center of the Arts (Peoria, IL) and International Ceramic studio in Kecskemet, Hungary. She has a MFA in Sculpture and New Media from the University of Illinois in Urbana-Champaign, and a Double BFA in Sculpture and Art History from the Kansas City Art Institute. Persons is an awarded Marine Corps combat veteran. She currently works as a studio artist and Fabricator with Paul Bernhard Exhibitions at Houston Museum of Natural Science.

samanthapersons.com

Christopher Wallace, a native of California's San Joaquin Valley, now resides and is based out of Houston, TX. He divides his time between being a studio art instructor at both the Glassell School of Art and the University of Houston, and as a practicing studio artist. Currently he is a shop assistant and member of Burning Bones Press. He has his MFA in Printmaking from the University of North Texas and received his BFA from the Kansas City Art Institute. He has also interned at both The Lawrence Lithography Workshop and the Incubator Press in Kansas City as well as worked with several other art organizations throughout the United States. His work has been shown nationally and internationally.

southpawprintmaking.blogspot.com

Grace R. Cavnar Gallery

Alex Goss

May-Can-Will

May-Can-Will transforms the Grace R. Cavnar Gallery into a space referencing public restrooms. The works utilize the formal quality and utilitarian conventions of stainless steel and porcelain within the habitat of the installation. Such un-defaceable materials flaunt the ability to deny users the power of play by refusing their misuse. As visitors navigate the installation, they may be called to accept the space as it directs them, or challenge the limits laid out by the objects around them. This exhibition not only exposes of the minute oppressive forces within conventional urban space, but also reminds the public of its capacity to live openly as participants within the space of their city.



Alex Goss

*youscrew 6-32, 2015
stainless steel
3/8 x 3/8 x 3/4"*

Alex Goss' practice questions the play between utility, censorship, and power held by public space and its users reflected by the material and spatial language of industrial hardware. Raised in Houston, Goss gained further exposure to urban space living in New York where he earned his BFA from Cooper Union. Goss's work has been shown in Washington DC, New York, Brooklyn, Baltimore, and Miami.

alexgoss.net

-MORE-

LAWNDALE ART CENTER

4912 Main Street

Houston, TX 77002

713 528.5858

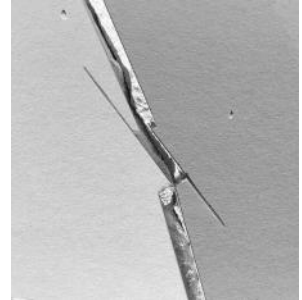
Fax 713 528.4140

askus@lawndaleartcenter.org

www.lawndaleartcenter.org

Project Space
Michelle Chang
Triptych

Triptych references the architecture of the Lawndale Art Center, a former retail store that was renovated into a non-profit art space. The installation sits in a gallery with three eccentric doors along a corridor. Instead of concealing the strangeness of this threshold condition, the project takes it as a design subject. It draws a reading of its elevation from two conflicting interpretations of Francis Bacon's *Triptych*, May - June 1973. On one hand, the work can be understood filmically. The three paintings show the narrative of Bacon's lover dying as he moves from toilet, sink, and over to death. The permanence of a single subject, George Dyer, gives the impression of a single door that frames a sequence of events. On the other, the triptych is a photographic view if the subject is impermanent. The repetition of similar subjects and the symmetry of architectural details suggest a long view of multiple doors from a corridor. This interpretation construes the gap between each painting as an architectural blank space, or blind spot, between areas of visual attention.



Michelle Chang
Triptych, 2016
Stud wall
31' x 15' x 8'

This exhibition privileges a photographic reading to construct a partition wall. It creates an alternate fiction to the current threshold to reveal its gaps. Digital seam carving is used to lengthen the wall towards a symmetrical condition, investigating its process to recast how we see.

Michelle Chang holds an M.Arch from Harvard University and a B.A. from the Johns Hopkins University in International Relations with a concentration in French. She is a former MacDowell Colony fellow and has previously worked for the architecture offices of SOM NY and Preston Scott Cohen, Inc. Her work has been shown at the Whitney Museum of American Art and the Museum of Contemporary Art in Chicago. In 2013, she founded a temporary architecture gallery in San Francisco called Department of Architecture (DoA).

ja-ja.co

About Lawndale:	Lawndale Art Center develops local contemporary artists and the audience for their art. Lawndale is dedicated to the presentation of contemporary art with an emphasis on work by Houston artists. Lawndale presents exhibitions, lectures and events, and offers an annual residency program to further the creative exchange of ideas among Houston's diverse artistic, cultural and student communities.
Address:	4912 Main St., Houston, TX 77002
For More Info:	www.lawndaleartcenter.org or askus@lawndaleartcenter.org
Gallery Hours:	Monday-Friday, 10-5; Saturday, 12-5; Closed Sunday
Admission:	Free
Viewing Dates:	These exhibitions open on Friday, May 6, 2016 and will remain on view through Saturday, June 11, 2016.
Press Contact:	Dennis Nance - 713-528-5858, dnance@lawndaleartcenter.org

Programs at Lawndale Art Center are supported in part by National Endowment for the Arts, Andy Warhol Foundation for the Visual Arts, City of Houston through the Houston Museum District Association, Texas Commission on the Arts, Houston Endowment, The Brown Foundation, Inc., The John R. Eckel, Jr. Foundation, John P. McGovern Foundation, Joan Hohlt and Roger Wich Foundation, Felvis Foundation/David R. Graham, Mid-America Arts Alliance, John M. O'Quinn, Gracie and Bob Cavnar, Cecily E. Horton, Ann W. Harithas, Diana M. Hudson and Lee Kaplan, Jenny and Mark Johnson, Paula Murphy, Nicole and Joey Romano, Scott R. Sparvero, Mary Martha and Joel Staff, Nancy and Sidney Williams, Nina and Michael Zilkha, Abel Design Group, Architectural Floors, Sterling McCall Lexus, TeleFlex, United Airlines and other contributors, memberships, benefit events and many volunteers.

- END -